



# INTERNATIONAL GEMOLOGICAL INSTITUTE

ELECTRONIC COPY

## LABORATORY GROWN DIAMOND REPORT

LG650482216

### LABORATORY GROWN DIAMOND REPORT

#### IGI LABORATORY GROWN DIAMOND IDENTIFICATION REPORT

September 23, 2024

IGI Report Number

LG650482216

Description

LABORATORY GROWN DIAMOND

Shape and Cutting Style

ROUND BRILLIANT

Measurements

8.17 - 8.19 X 5.10 MM

#### GRADING RESULTS

Carat Weight

2.09 CARATS

Color Grade

E

Clarity Grade

VVS 1

Cut Grade

IDEAL

#### ADDITIONAL GRADING INFORMATION

Polish

EXCELLENT

Symmetry

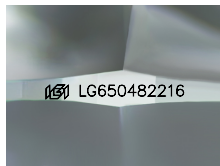
EXCELLENT

Fluorescence

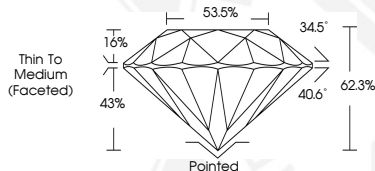
NONE

Inscription(s)

IGI LG650482216



Sample Image Used



THIS DOCUMENT WAS PRODUCED WITH THE FOLLOWING SECURITY MEASURES: SPECIAL DOCUMENT PAPER, INK SCREENS, WATERMARK, BACKGROUND DESIGN, HOLOGRAM AND OTHER SECURITY FEATURES NOT LISTED AND DO EXCEED DOCUMENT SECURITY INDUSTRY GUIDELINES.

For terms & conditions and to verify this report, please visit [www.igi.org](http://www.igi.org)

#### IGI LABORATORY GROWN DIAMOND ID REPORT

September 23, 2024

IGI Report Number LG650482216

#### ROUND BRILLIANT

8.17 - 8.19 X 5.10 MM

Carat Weight 2.09 CARATS

Color Grade E

Clarity Grade VVS 1

Cut Grade IDEAL

Polish EXCELLENT

Symmetry EXCELLENT

Fluorescence NONE

Inscription(s) IGI LG650482216

#### IGI LABORATORY GROWN DIAMOND ID REPORT

September 23, 2024

IGI Report Number LG650482216

#### ROUND BRILLIANT

8.17 - 8.19 X 5.10 MM

Carat Weight 2.09 CARATS

Color Grade E

Clarity Grade VVS 1

Cut Grade IDEAL

Polish EXCELLENT

Symmetry EXCELLENT

Fluorescence NONE

Inscription(s) IGI LG650482216