



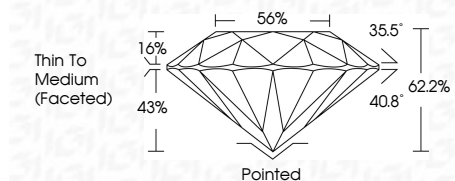
ELECTRONIC COPY

LG780620418 Report verification at igi.org



March 7, 2026 IGI Report Number LG780620418 Description LABORATORY GROWN DIAMOND Shape and Cutting Style ROUND BRILLIANT Measurements 8.10 - 8.13 X 5.05 MM

GRADING RESULTS Carat Weight 2.03 CARATS Color Grade D Clarity Grade VS 1 Cut Grade IDEAL



ADDITIONAL GRADING INFORMATION Polish EXCELLENT Symmetry EXCELLENT Fluorescence NONE Inscription(s) LG780620418 Comments: This Laboratory Grown Diamond was created by Chemical Vapor Deposition (CVD) growth process. Type IIa



March 7, 2026 IGI Report No LG780620418 ROUND BRILLIANT 8.10 - 8.13 X 5.05 MM 2.03 CARATS D VS 1 IDEAL 62.2% 56% Thin To Medium (Faceted) Pointed EXCELLENT EXCELLENT NONE LG780620418

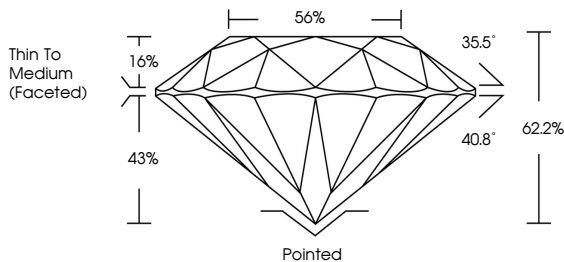
March 7, 2026 IGI Report Number LG780620418 Description LABORATORY GROWN DIAMOND Shape and Cutting Style ROUND BRILLIANT Measurements 8.10 - 8.13 X 5.05 MM

GRADING RESULTS Carat Weight 2.03 CARATS Color Grade D Clarity Grade VS 1 Cut Grade IDEAL

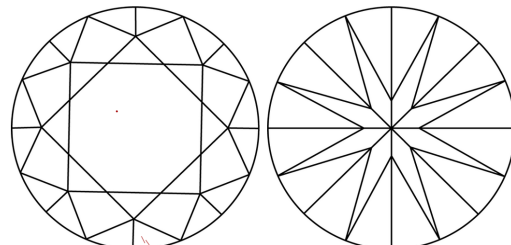
ADDITIONAL GRADING INFORMATION Polish EXCELLENT Symmetry EXCELLENT Fluorescence NONE Inscription(s) LG780620418

Comments: This Laboratory Grown Diamond was created by Chemical Vapor Deposition (CVD) growth process. Type IIa

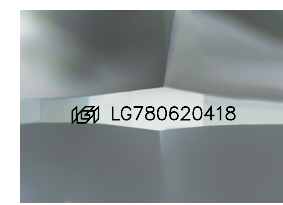
PROPORTIONS



CLARITY CHARACTERISTICS



KEY TO SYMBOLS Red symbols indicate internal characteristics. Green symbols indicate external characteristics.



Sample Image Used

Table with 10 columns for color grades: D, E, F, G, H, I, J, Faint, Very Light, Light.

Table with 6 columns for clarity grades: FL, IF, VS 1-2, VS 1-2, SI 1-2, I 1-3.



THIS DOCUMENT WAS PRODUCED WITH THE FOLLOWING SECURITY MEASURES: SPECIAL DOCUMENT PAPER, INK SCREENS, WATERMARK BACKGROUND DESIGNS, HOLOGRAM AND OTHER SECURITY FEATURES NOT LISTED AND DO EXCEED DOCUMENT SECURITY INDUSTRY GUIDELINES.