



ELECTRONIC COPY

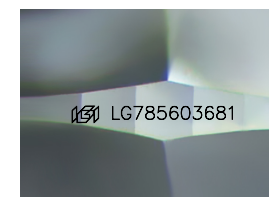
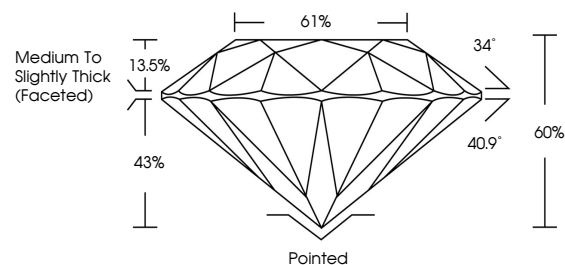
LG785603681 Report verification at igi.org



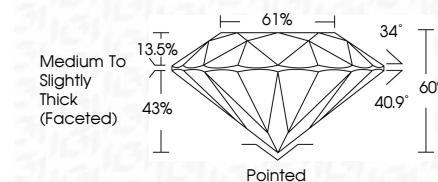
March 23, 2026 IGI Report Number LG785603681 Description LABORATORY GROWN DIAMOND Shape and Cutting Style ROUND BRILLIANT Measurements 6.56 - 6.60 X 3.95 MM GRADING RESULTS Carat Weight 1.04 CARAT Color Grade F Clarity Grade VVS 2 Cut Grade EXCELLENT

March 23, 2026 IGI Report Number LG785603681 Description LABORATORY GROWN DIAMOND Shape and Cutting Style ROUND BRILLIANT Measurements 6.56 - 6.60 X 3.95 MM GRADING RESULTS Carat Weight 1.04 CARAT Color Grade F Clarity Grade VVS 2 Cut Grade EXCELLENT

PROPORTIONS



Sample Image Used



ADDITIONAL GRADING INFORMATION

Polish EXCELLENT Symmetry EXCELLENT Fluorescence NONE Inscription(s) IGI LG785603681

ADDITIONAL GRADING INFORMATION

Polish EXCELLENT Symmetry EXCELLENT Fluorescence NONE Inscription(s) IGI LG785603681 Comments: This Laboratory Grown Diamond was created by Chemical Vapor Deposition (CVD) growth process. Type IIa

COLOR

D E F G H I J Faint Very Light Light

CLARITY

FL IF VS 1-2 VS 1-2 SI 1-2 I 1-3 Flawless Internally Flawless Very Very Slightly Included Very Slightly Included Slightly Included Included



IGI



March 23, 2026 IGI Report No LG785603681 ROUND BRILLIANT 6.56 - 6.60 X 3.95 MM 1.04 CARAT F VVS 2 EXCELLENT 61% Medium To Slightly Thick (Faceted) Pointed EXCELLENT EXCELLENT NONE NONE IGI LG785603681 Comments: This Laboratory Grown Diamond was created by Chemical Vapor Deposition (CVD) growth process. Type IIa

Certified SUSTAINABILITY RATED DIAMOND SCS GLOBAL SERVICES All certified diamonds come with an individual certificate, ONLY available at an accredited retailer



FOR THE SUSTAINABILITY RATED CERTIFICATE, SCAN HERE →