



ELECTRONIC COPY

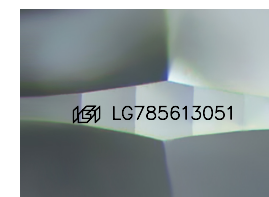
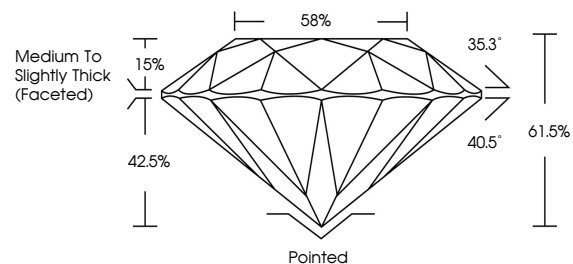
LG785613051
Report verification at igi.org



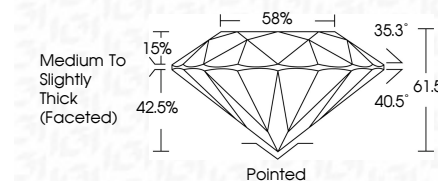
March 25, 2026
IGI Report Number LG785613051
Description LABORATORY GROWN DIAMOND
Shape and Cutting Style ROUND BRILLIANT
Measurements 7.31 - 7.36 X 4.51 MM
GRADING RESULTS
Carat Weight 1.51 CARAT
Color Grade E
Clarity Grade VVS 2
Cut Grade IDEAL

March 25, 2026
IGI Report Number LG785613051
Description LABORATORY GROWN DIAMOND
Shape and Cutting Style ROUND BRILLIANT
Measurements 7.31 - 7.36 X 4.51 MM
GRADING RESULTS
Carat Weight 1.51 CARAT
Color Grade E
Clarity Grade VVS 2
Cut Grade IDEAL

PROPORTIONS



Sample Image Used



ADDITIONAL GRADING INFORMATION

Polish EXCELLENT
Symmetry EXCELLENT
Fluorescence NONE
Inscription(s) IGI LG785613051

Comments: This Laboratory Grown Diamond was created by Chemical Vapor Deposition (CVD) growth process. Type IIa

COLOR

D E F G H I J Faint Very Light Light

CLARITY

FL IF VS 1-2 VS 1-2 SI 1-2 I 1-3
Flawless Internally Flawless Very Very Slightly Included Very Slightly Included Slightly Included Included

ADDITIONAL GRADING INFORMATION

Polish EXCELLENT
Symmetry EXCELLENT
Fluorescence NONE
Inscription(s) IGI LG785613051
Comments: This Laboratory Grown Diamond was created by Chemical Vapor Deposition (CVD) growth process. Type IIa



March 25, 2026
IGI Report No LG785613051
ROUND BRILLIANT
7.31 - 7.36 X 4.51 MM
1.51 CARAT
E
VVS 2
IDEAL
61.5%
88%
Medium To Slightly Thick (Faceted)
Pointed
EXCELLENT
EXCELLENT
NONE
IGI LG785613051
Comments: This Laboratory Grown Diamond was created by Chemical Vapor Deposition (CVD) growth process. Type IIa

Certified SUSTAINABILITY RATED DIAMOND. All certified diamonds come with an individual certificate, ONLY available at an accredited retailer. SCS GLOBAL SERVICES. FOR THE SUSTAINABILITY RATED CERTIFICATE, SCAN HERE -> [QR code]