



ELECTRONIC COPY

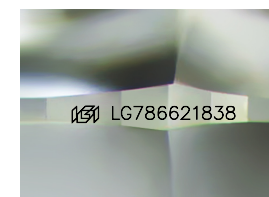
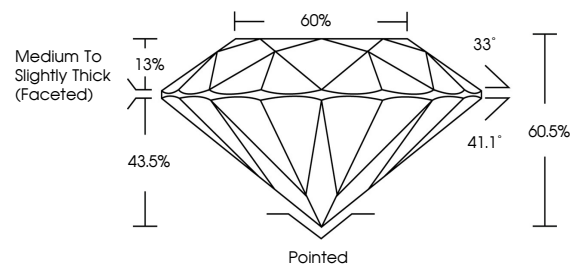
LG786621838 Report verification at igi.org



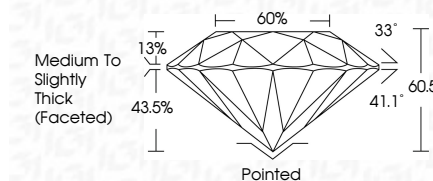
March 28, 2026 IGI Report Number LG786621838 Description LABORATORY GROWN DIAMOND Shape and Cutting Style ROUND BRILLIANT Measurements 7.43 - 7.49 X 4.51 MM GRADING RESULTS Carat Weight 1.54 CARAT Color Grade E Clarity Grade VVS 2 Cut Grade IDEAL

March 28, 2026 IGI Report Number LG786621838 Description LABORATORY GROWN DIAMOND Shape and Cutting Style ROUND BRILLIANT Measurements 7.43 - 7.49 X 4.51 MM GRADING RESULTS Carat Weight 1.54 CARAT Color Grade E Clarity Grade VVS 2 Cut Grade IDEAL

PROPORTIONS



Sample Image Used



ADDITIONAL GRADING INFORMATION

Polish EXCELLENT Symmetry EXCELLENT Fluorescence NONE Inscription(s) IGI LG786621838

Comments: This Laboratory Grown Diamond was created by Chemical Vapor Deposition (CVD) growth process. Type IIa

COLOR

D E F G H I J Faint Very Light Light

CLARITY

FL IF VS 1-2 VS 1-2 SI 1-2 I 1-3 Flawless Internally Flawless Very Very Slightly Included Very Slightly Included Slightly Included Included

ADDITIONAL GRADING INFORMATION

Polish EXCELLENT Symmetry EXCELLENT Fluorescence NONE Inscription(s) IGI LG786621838 Comments: This Laboratory Grown Diamond was created by Chemical Vapor Deposition (CVD) growth process. Type IIa



March 28, 2026 IGI Report No LG786621838 ROUND BRILLIANT 7.43 - 7.49 X 4.51 MM 1.54 CARAT E VVS 2 IDEAL 60.5% 66% Medium To Slightly Thick (Faceted) Pointed EXCELLENT EXCELLENT NONE NONE IGI LG786621838 Comments: This Laboratory Grown Diamond was created by Chemical Vapor Deposition (CVD) growth process. Type IIa

Certified SUSTAINABILITY RATED DIAMOND SCS GLOBAL SERVICES All certified diamonds come with an individual certificate, ONLY available at an accredited retailer. Includes QR code.

FOR THE SUSTAINABILITY RATED CERTIFICATE, SCAN HERE →