



ELECTRONIC COPY

LABORATORY GROWN DIAMOND REPORT

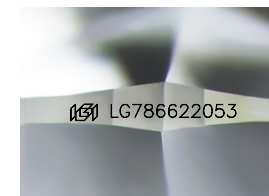
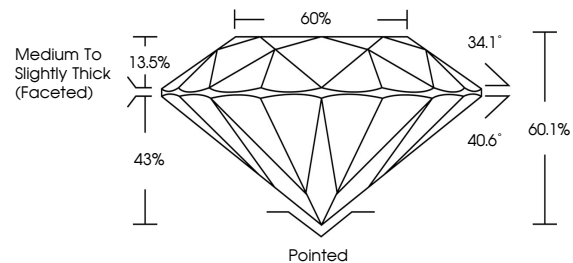
March 26, 2026
IGI Report Number LG786622053
Description LABORATORY GROWN DIAMOND
Shape and Cutting Style ROUND BRILLIANT
Measurements 7.43 - 7.48 X 4.48 MM
GRADING RESULTS
Carat Weight 1.54 CARAT
Color Grade E
Clarity Grade VVS 2
Cut Grade IDEAL

ADDITIONAL GRADING INFORMATION

Polish EXCELLENT
Symmetry EXCELLENT
Fluorescence NONE
Inscription(s) IGI LG786622053

Comments: This Laboratory Grown Diamond was created by Chemical Vapor Deposition (CVD) growth process. Type IIa

PROPORTIONS



Sample Image Used

COLOR

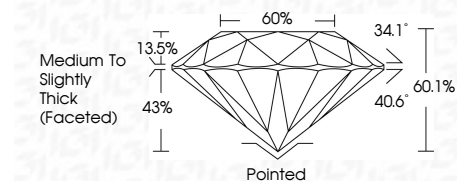
D E F G H I J Faint Very Light Light

CLARITY

FL IF VS¹⁻² VS¹⁻² SI¹⁻² I¹⁻³
Flawless Internally Flawless Very Very Slightly Included Very Slightly Included Slightly Included Included



March 26, 2026
IGI Report Number LG786622053
Description LABORATORY GROWN DIAMOND
Shape and Cutting Style ROUND BRILLIANT
Measurements 7.43 - 7.48 X 4.48 MM
GRADING RESULTS
Carat Weight 1.54 CARAT
Color Grade E
Clarity Grade VVS 2
Cut Grade IDEAL



ADDITIONAL GRADING INFORMATION

Polish EXCELLENT
Symmetry EXCELLENT
Fluorescence NONE
Inscription(s) IGI LG786622053
Comments: This Laboratory Grown Diamond was created by Chemical Vapor Deposition (CVD) growth process. Type IIa



Certified SUSTAINABILITY RATED DIAMOND
SCS GLOBAL SERVICES
All certified diamonds come with an individual certificate, ONLY available at an accredited retailer
FOR THE SUSTAINABILITY RATED CERTIFICATE, SCAN HERE →



March 26, 2026
IGI Report No LG786622053
ROUND BRILLIANT
7.43 - 7.48 X 4.48 MM
1.54 CARAT
E
VVS 2
IDEAL
60.1%
60%
Medium To Slightly Thick (Faceted)
Pointed
EXCELLENT
EXCELLENT
NONE
IGI LG786622053
Comments: This Laboratory Grown Diamond was created by Chemical Vapor Deposition (CVD) growth process. Type IIa