



ELECTRONIC COPY

LG786693404
Report verification at igi.org



April 1, 2026

IGI Report Number **LG786693404**

Description **LABORATORY GROWN DIAMOND**

Shape and Cutting Style **ROUND BRILLIANT**

Measurements **6.41 - 6.46 X 3.97 MM**

GRADING RESULTS

Carat Weight **1.01 CARAT**

Color Grade **D**

Clarity Grade **VVS 2**

Cut Grade **IDEAL**

April 1, 2026

IGI Report Number **LG786693404**

Description **LABORATORY GROWN DIAMOND**

Shape and Cutting Style **ROUND BRILLIANT**

Measurements **6.41 - 6.46 X 3.97 MM**

GRADING RESULTS

Carat Weight **1.01 CARAT**

Color Grade **D**

Clarity Grade **VVS 2**

Cut Grade **IDEAL**

ADDITIONAL GRADING INFORMATION

Polish **EXCELLENT**

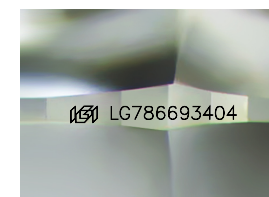
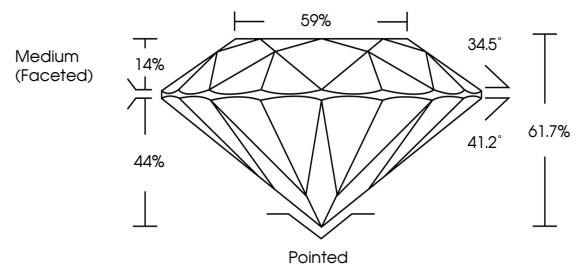
Symmetry **EXCELLENT**

Fluorescence **NONE**

Inscription(s) **IGI LG786693404**

Comments: This Laboratory Grown Diamond was created by Chemical Vapor Deposition (CVD) growth process. Type IIa

PROPORTIONS



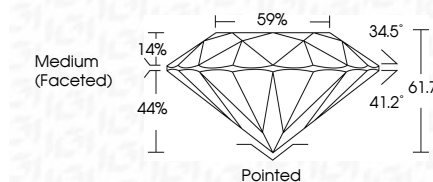
Sample Image Used

COLOR

D E F G H I J Faint Very Light Light

CLARITY

| FL | IF | VVS ¹⁻² | VS ¹⁻² | SI ¹⁻² | I ¹⁻³ |
|----------|---------------------|-----------------------------|------------------------|-------------------|------------------|
| Flawless | Internally Flawless | Very Very Slightly Included | Very Slightly Included | Slightly Included | Included |



ADDITIONAL GRADING INFORMATION

Polish **EXCELLENT**

Symmetry **EXCELLENT**

Fluorescence **NONE**

Inscription(s) **IGI LG786693404**

Comments: This Laboratory Grown Diamond was created by Chemical Vapor Deposition (CVD) growth process. Type IIa



IGI



| | | | | | | | | |
|-----------------|---------------------------|----------------|-----------------|----------------|-----------------|-----------|------|------------------|
| April 1, 2026 | IGI Report No LG786693404 | 1.01 CARAT | D | Pointed | EXCELLENT | EXCELLENT | NONE | IGI LG786693404 |
| ROUND BRILLIANT | 6.41 - 6.46 X 3.97 MM | Color Grade | VVS 2 | Depth | IDEAL | 61.7% | 59% | Medium (Faceted) |
| | | Cut Grade | IDEAL | Girdle | 61.7% | | | |
| | | Polish | EXCELLENT | Culet | None | | | |
| | | Symmetry | EXCELLENT | Symmetry | EXCELLENT | | | |
| | | Fluorescence | NONE | Fluorescence | NONE | | | |
| | | Inscription(s) | IGI LG786693404 | Inscription(s) | IGI LG786693404 | | | |

Comments: This Laboratory Grown Diamond was created by Chemical Vapor Deposition (CVD) growth process. Type IIa

Certified
**SUSTAINABILITY RATED
DIAMOND**
SCS GLOBAL SERVICES

All certified diamonds come with an individual certificate, **ONLY** available at an accredited retailer

FOR THE SUSTAINABILITY RATED CERTIFICATE, SCAN HERE →