



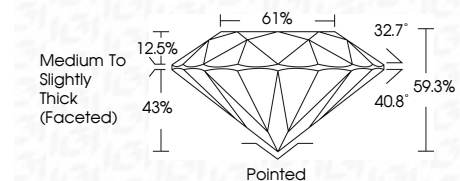
ELECTRONIC COPY

LG798614112
Report verification at igi.org



May 6, 2026
IGI Report Number LG798614112
Description LABORATORY GROWN DIAMOND
Shape and Cutting Style ROUND BRILLIANT
Measurements 8.27 - 8.33 X 4.91 MM

GRADING RESULTS
Carat Weight 2.06 CARATS
Color Grade F
Clarity Grade VVS 2
Cut Grade EXCELLENT



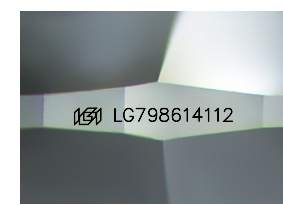
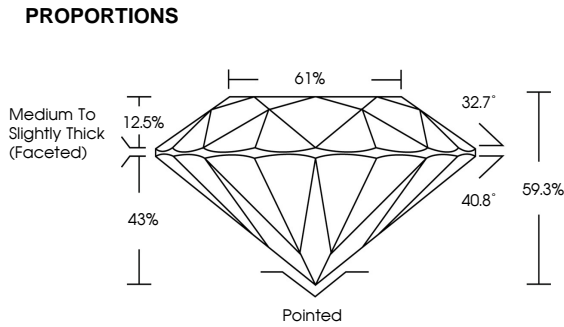
ADDITIONAL GRADING INFORMATION
Polish EXCELLENT
Symmetry EXCELLENT
Fluorescence NONE
Inscription(s) IGI LG798614112
Comments: This Laboratory Grown Diamond was created by Chemical Vapor Deposition (CVD) growth process. Type IIa



May 6, 2026
IGI Report No LG798614112
ROUND BRILLIANT
8.27 - 8.33 X 4.91 MM
2.06 CARATS
Color Grade F
Clarity Grade VVS 2
Cut Grade EXCELLENT
Depth 59.3%
Table 61%
Girdle Medium To Slightly Thick (Faceted)
Culet Pointed
Polish EXCELLENT
Symmetry EXCELLENT
Fluorescence NONE
Inscription(s) IGI LG798614112
Comments: This Laboratory Grown Diamond was created by Chemical Vapor Deposition (CVD) growth process. Type IIa

LABORATORY GROWN DIAMOND REPORT

May 6, 2026
IGI Report Number LG798614112
Description LABORATORY GROWN DIAMOND
Shape and Cutting Style ROUND BRILLIANT
Measurements 8.27 - 8.33 X 4.91 MM
GRADING RESULTS
Carat Weight 2.06 CARATS
Color Grade F
Clarity Grade VVS 2
Cut Grade EXCELLENT



Sample Image Used

Table with columns for Color grades: D, E, F, G, H, I, J, Faint, Very Light, Light

Table with columns for Clarity grades: FL, IF, VS 1-2, VS 1-2, SI 1-2, I 1-3

ADDITIONAL GRADING INFORMATION
Polish EXCELLENT
Symmetry EXCELLENT
Fluorescence NONE
Inscription(s) IGI LG798614112
Comments: This Laboratory Grown Diamond was created by Chemical Vapor Deposition (CVD) growth process. Type IIa

Certified SUSTAINABILITY RATED DIAMOND. SCS GLOBAL SERVICES. QR code and text: All certified diamonds come with an individual certificate, ONLY available at an accredited retailer.

THIS DOCUMENT WAS PRODUCED WITH THE FOLLOWING SECURITY MEASURES: SPECIAL DOCUMENT PAPER, INK SCREENS, WATERMARK BACKGROUND DESIGNS, HOLOGRAM AND OTHER SECURITY FEATURES NOT LISTED AND DO EXCEED DOCUMENT SECURITY INDUSTRY GUIDELINES.