



ELECTRONIC COPY

LG798614158 Report verification at igi.org



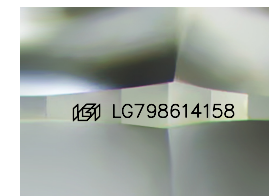
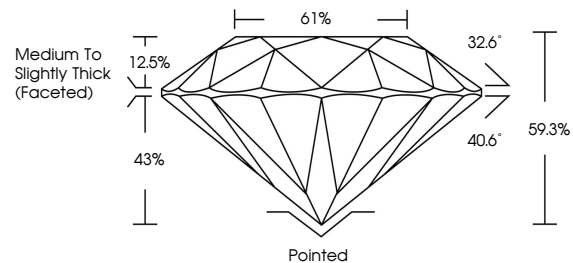
May 7, 2026 IGI Report Number LG798614158 Description LABORATORY GROWN DIAMOND Shape and Cutting Style ROUND BRILLIANT Measurements 6.52 - 6.57 X 3.88 MM GRADING RESULTS Carat Weight 1.01 CARAT Color Grade E Clarity Grade VVS 2 Cut Grade EXCELLENT

May 7, 2026 IGI Report Number LG798614158 Description LABORATORY GROWN DIAMOND Shape and Cutting Style ROUND BRILLIANT Measurements 6.52 - 6.57 X 3.88 MM GRADING RESULTS Carat Weight 1.01 CARAT Color Grade E Clarity Grade VVS 2 Cut Grade EXCELLENT

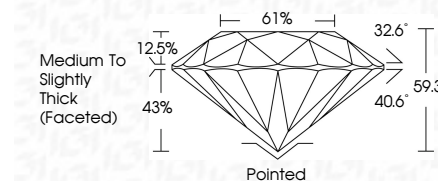
ADDITIONAL GRADING INFORMATION Polish EXCELLENT Symmetry EXCELLENT Fluorescence NONE Inscription(s) IGI LG798614158

Comments: This Laboratory Grown Diamond was created by Chemical Vapor Deposition (CVD) growth process. Type IIa

PROPORTIONS



Sample Image Used



COLOR

D E F G H I J Faint Very Light Light

CLARITY

FL IF VS 1-2 VS 1-2 SI 1-2 I 1-3 Flawless Internally Flawless Very Very Slightly Included Very Slightly Included Slightly Included Included

ADDITIONAL GRADING INFORMATION

Polish EXCELLENT Symmetry EXCELLENT Fluorescence NONE Inscription(s) IGI LG798614158 Comments: This Laboratory Grown Diamond was created by Chemical Vapor Deposition (CVD) growth process. Type IIa



May 7, 2026 IGI Report No LG798614158 ROUND BRILLIANT 6.52 - 6.57 X 3.88 MM 1.01 CARAT E VVS 2 EXCELLENT 61% 59.3% 32.6° 40.6° Medium To Slightly Thick (Faceted) Pointed EXCELLENT EXCELLENT NONE IGI LG798614158 Comments: This Laboratory Grown Diamond was created by Chemical Vapor Deposition (CVD) growth process. Type IIa

Certified SUSTAINABILITY RATED DIAMOND SCS GLOBAL SERVICES All certified diamonds come with an individual certificate, ONLY available at an accredited retailer. Includes QR code.

FOR THE SUSTAINABILITY RATED CERTIFICATE, SCAN HERE →