



ELECTRONIC COPY

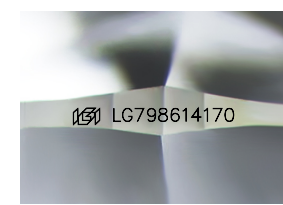
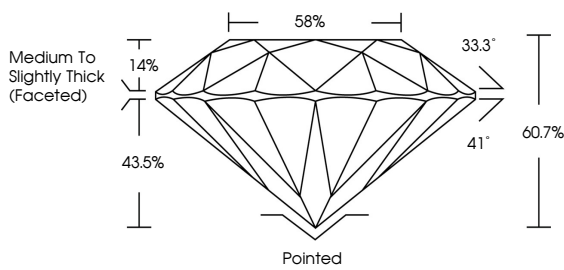
LG798614170
Report verification at igi.org



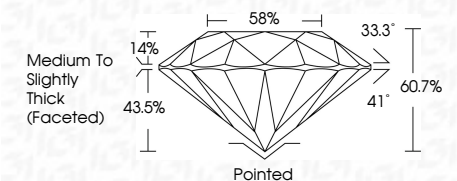
May 6, 2026
IGI Report Number LG798614170
Description LABORATORY GROWN DIAMOND
Shape and Cutting Style ROUND BRILLIANT
Measurements 8.14 - 8.18 X 4.95 MM
GRADING RESULTS
Carat Weight 2.00 CARATS
Color Grade F
Clarity Grade VVS 2
Cut Grade IDEAL

May 6, 2026
IGI Report Number LG798614170
Description LABORATORY GROWN DIAMOND
Shape and Cutting Style ROUND BRILLIANT
Measurements 8.14 - 8.18 X 4.95 MM
GRADING RESULTS
Carat Weight 2.00 CARATS
Color Grade F
Clarity Grade VVS 2
Cut Grade IDEAL

PROPORTIONS



Sample Image Used



ADDITIONAL GRADING INFORMATION
Polish EXCELLENT
Symmetry EXCELLENT
Fluorescence NONE
Inscription(s) IGI LG798614170

Comments: This Laboratory Grown Diamond was created by Chemical Vapor Deposition (CVD) growth process. Type IIa

COLOR

Color scale table with categories D, E, F, G, H, I, J, Faint, Very Light, Light.

CLARITY

Clarity scale table with categories FL, IF, VS 1-2, VS 1-2, SI 1-2, I 1-3, Flawless, Internally Flawless, Very Very Slightly Included, Very Slightly Included, Slightly Included, Included.

ADDITIONAL GRADING INFORMATION

Polish EXCELLENT
Symmetry EXCELLENT
Fluorescence NONE
Inscription(s) IGI LG798614170
Comments: This Laboratory Grown Diamond was created by Chemical Vapor Deposition (CVD) growth process. Type IIa



Certified SUSTAINABILITY RATED DIAMOND. SCS GLOBAL SERVICES. All certified diamonds come with an individual certificate, ONLY available at an accredited retailer. Includes QR code and 'FOR THE SUSTAINABILITY RATED CERTIFICATE, SCAN HERE' text.

Summary of report details: May 6, 2026, IGI Report No. LG798614170, ROUND BRILLIANT, 8.14 - 8.18 X 4.95 MM, 2.00 CARATS, F, VVS 2, IDEAL, 60.7%, 58%, Medium To Slightly Thick (Faceted), Pointed, EXCELLENT, EXCELLENT, NONE, IGI LG798614170. Comments: This Laboratory Grown Diamond was created by Chemical Vapor Deposition (CVD) growth process. Type IIa.