



ELECTRONIC COPY

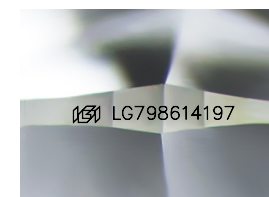
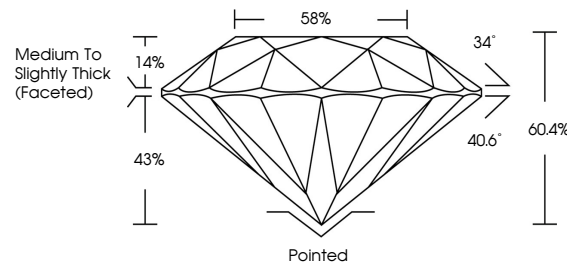
LG798614197
Report verification at igi.org



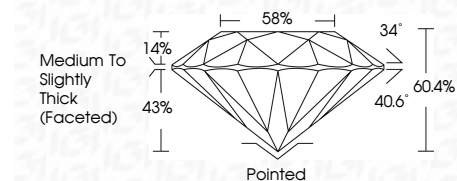
May 7, 2026
IGI Report Number LG798614197
Description LABORATORY GROWN DIAMOND
Shape and Cutting Style ROUND BRILLIANT
Measurements 8.17 - 8.20 X 4.94 MM
GRADING RESULTS
Carat Weight 2.02 CARATS
Color Grade E
Clarity Grade VVS 2
Cut Grade IDEAL

May 7, 2026
IGI Report Number LG798614197
Description LABORATORY GROWN DIAMOND
Shape and Cutting Style ROUND BRILLIANT
Measurements 8.17 - 8.20 X 4.94 MM
GRADING RESULTS
Carat Weight 2.02 CARATS
Color Grade E
Clarity Grade VVS 2
Cut Grade IDEAL

PROPORTIONS



Sample Image Used



ADDITIONAL GRADING INFORMATION

Polish EXCELLENT
Symmetry EXCELLENT
Fluorescence NONE
Inscription(s) IGI LG798614197

Comments: This Laboratory Grown Diamond was created by Chemical Vapor Deposition (CVD) growth process. Type IIa

COLOR

D E F G H I J Faint Very Light Light

CLARITY

FL IF VS 1-2 VS 1-2 SI 1-2 I 1-3
Flawless Internally Flawless Very Very Slightly Included Very Slightly Included Slightly Included Included

ADDITIONAL GRADING INFORMATION

Polish EXCELLENT
Symmetry EXCELLENT
Fluorescence NONE
Inscription(s) IGI LG798614197
Comments: This Laboratory Grown Diamond was created by Chemical Vapor Deposition (CVD) growth process. Type IIa



May 7, 2026
IGI Report No LG798614197
ROUND BRILLIANT
8.17 - 8.20 X 4.94 MM
2.02 CARATS
E
VVS 2
IDEAL
60.4%
58%
Medium To Slightly Thick (Faceted)
Pointed
EXCELLENT
EXCELLENT
NONE
IGI LG798614197
Comments: This Laboratory Grown Diamond was created by Chemical Vapor Deposition (CVD) growth process. Type IIa

Certified SUSTAINABILITY RATED DIAMOND. SCS GLOBAL SERVICES. All certified diamonds come with an individual certificate, ONLY available at an accredited retailer. Includes QR code and 'FOR THE SUSTAINABILITY RATED CERTIFICATE, SCAN HERE' text.