



ELECTRONIC COPY

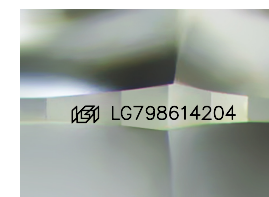
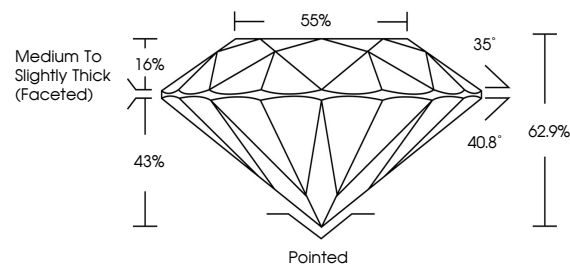
LG798614204 Report verification at igi.org



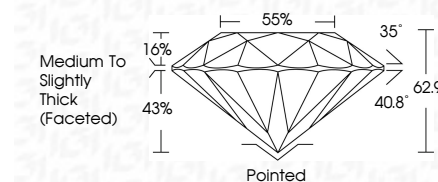
May 7, 2026 IGI Report Number LG798614204 Description LABORATORY GROWN DIAMOND Shape and Cutting Style ROUND BRILLIANT Measurements 8.03 - 8.07 X 5.06 MM GRADING RESULTS Carat Weight 2.02 CARATS Color Grade E Clarity Grade VVS 2 Cut Grade EXCELLENT

May 7, 2026 IGI Report Number LG798614204 Description LABORATORY GROWN DIAMOND Shape and Cutting Style ROUND BRILLIANT Measurements 8.03 - 8.07 X 5.06 MM GRADING RESULTS Carat Weight 2.02 CARATS Color Grade E Clarity Grade VVS 2 Cut Grade EXCELLENT

PROPORTIONS



Sample Image Used



ADDITIONAL GRADING INFORMATION

Polish EXCELLENT Symmetry EXCELLENT Fluorescence NONE Inscription(s) IGI LG798614204

Comments: This Laboratory Grown Diamond was created by Chemical Vapor Deposition (CVD) growth process. Type IIa

COLOR

D E F G H I J Faint Very Light Light

CLARITY

FL IF VS 1-2 VS 1-2 SI 1-2 I 1-3 Flawless Internally Flawless Very Very Slightly Included Very Slightly Included Slightly Included Included

ADDITIONAL GRADING INFORMATION

Polish EXCELLENT Symmetry EXCELLENT Fluorescence NONE Inscription(s) IGI LG798614204 Comments: This Laboratory Grown Diamond was created by Chemical Vapor Deposition (CVD) growth process. Type IIa



IGI



May 7, 2026 IGI Report No LG798614204 ROUND BRILLIANT 8.03 - 8.07 X 5.06 MM 2.02 CARATS E VVS 2 EXCELLENT 62.9% 85% Medium To Slightly Thick (Faceted) Pointed EXCELLENT EXCELLENT NONE NONE IGI LG798614204 Comments: This Laboratory Grown Diamond was created by Chemical Vapor Deposition (CVD) growth process. Type IIa

Certified SUSTAINABILITY RATED DIAMOND SCS GLOBAL SERVICES All certified diamonds come with an individual certificate, ONLY available at an accredited retailer. Includes QR code and 'FOR THE SUSTAINABILITY RATED CERTIFICATE, SCAN HERE' text.