



ELECTRONIC COPY

LG798614221 Report verification at igi.org



May 7, 2026 IGI Report Number LG798614221 Description LABORATORY GROWN DIAMOND Shape and Cutting Style ROUND BRILLIANT Measurements 6.47 - 6.54 X 3.97 MM GRADING RESULTS Carat Weight 1.02 CARAT Color Grade D Clarity Grade VVS 2 Cut Grade IDEAL

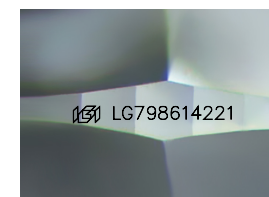
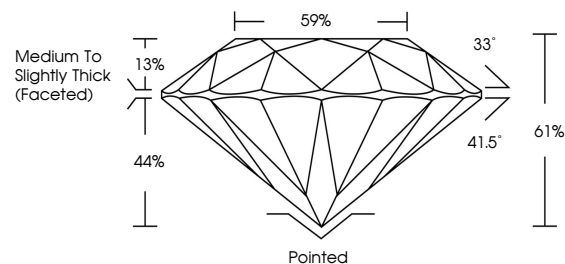
May 7, 2026 IGI Report Number LG798614221 Description LABORATORY GROWN DIAMOND Shape and Cutting Style ROUND BRILLIANT Measurements 6.47 - 6.54 X 3.97 MM GRADING RESULTS Carat Weight 1.02 CARAT Color Grade D Clarity Grade VVS 2 Cut Grade IDEAL

ADDITIONAL GRADING INFORMATION

Polish EXCELLENT Symmetry EXCELLENT Fluorescence NONE Inscription(s) IGI LG798614221

Comments: This Laboratory Grown Diamond was created by Chemical Vapor Deposition (CVD) growth process. Type IIa

PROPORTIONS



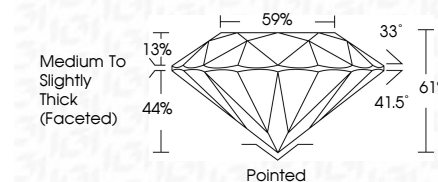
Sample Image Used

COLOR

D E F G H I J Faint Very Light Light

CLARITY

FL IF VS 1-2 VS 1-2 SI 1-2 I 1-3 Flawless Internally Flawless Very Very Slightly Included Very Slightly Included Slightly Included Included



ADDITIONAL GRADING INFORMATION

Polish EXCELLENT Symmetry EXCELLENT Fluorescence NONE Inscription(s) IGI LG798614221 Comments: This Laboratory Grown Diamond was created by Chemical Vapor Deposition (CVD) growth process. Type IIa



Certified SUSTAINABILITY RATED DIAMOND SCS GLOBAL SERVICES All certified diamonds come with an individual certificate, ONLY available at an accredited retailer



FOR THE SUSTAINABILITY RATED CERTIFICATE, SCAN HERE



Summary of report details: May 7, 2026 IGI Report No LG798614221 ROUND BRILLIANT 6.47 - 6.54 X 3.97 MM 1.02 CARAT D VVS 2 IDEAL 61% 61% Medium To Slightly Thick (Faceted) Pointed EXCELLENT EXCELLENT NONE IGI LG798614221

Comments: This Laboratory Grown Diamond was created by Chemical Vapor Deposition (CVD) growth process. Type IIa