



ELECTRONIC COPY

LG798614251 Report verification at igi.org



May 7, 2026 IGI Report Number LG798614251 Description LABORATORY GROWN DIAMOND Shape and Cutting Style ROUND BRILLIANT Measurements 8.10 - 8.16 X 5.03 MM GRADING RESULTS Carat Weight 2.04 CARATS Color Grade E Clarity Grade VVS 2 Cut Grade IDEAL

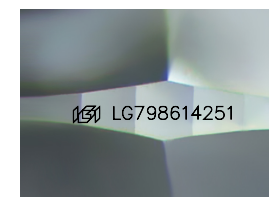
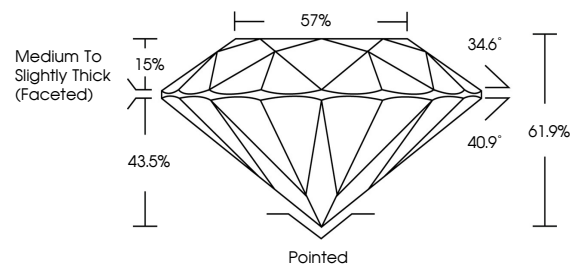
May 7, 2026 IGI Report Number LG798614251 Description LABORATORY GROWN DIAMOND Shape and Cutting Style ROUND BRILLIANT Measurements 8.10 - 8.16 X 5.03 MM GRADING RESULTS Carat Weight 2.04 CARATS Color Grade E Clarity Grade VVS 2 Cut Grade IDEAL

ADDITIONAL GRADING INFORMATION

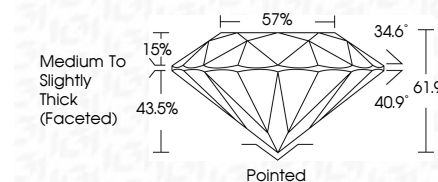
Polish EXCELLENT Symmetry EXCELLENT Fluorescence NONE Inscription(s) IGI LG798614251

Comments: This Laboratory Grown Diamond was created by Chemical Vapor Deposition (CVD) growth process. Type IIa

PROPORTIONS



Sample Image Used



COLOR

D E F G H I J Faint Very Light Light

CLARITY

FL IF VS 1-2 VS 1-2 SI 1-2 I 1-3 Flawless Internally Flawless Very Very Slightly Included Very Slightly Included Slightly Included Included

ADDITIONAL GRADING INFORMATION

Polish EXCELLENT Symmetry EXCELLENT Fluorescence NONE Inscription(s) IGI LG798614251 Comments: This Laboratory Grown Diamond was created by Chemical Vapor Deposition (CVD) growth process. Type IIa



IGI



May 7, 2026 IGI Report No. LG798614251 ROUND BRILLIANT 8.10 - 8.16 X 5.03 MM 2.04 CARATS E VVS 2 IDEAL 61.9% 57% Medium To Slightly Thick (Faceted) Pointed EXCELLENT EXCELLENT NONE NONE IGI LG798614251 Comments: This Laboratory Grown Diamond was created by Chemical Vapor Deposition (CVD) growth process. Type IIa

Certified SUSTAINABILITY RATED DIAMOND SCS GLOBAL SERVICES All certified diamonds come with an individual certificate, ONLY available at an accredited retailer. Includes QR code.

FOR THE SUSTAINABILITY RATED CERTIFICATE, SCAN HERE →