



ELECTRONIC COPY

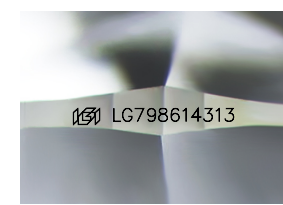
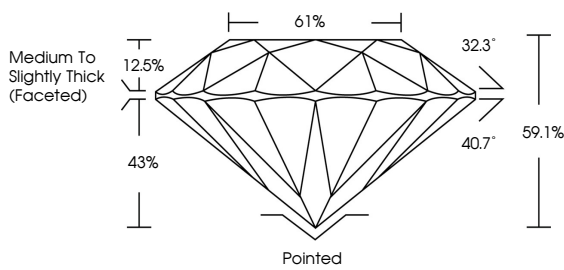
LG798614313 Report verification at igi.org



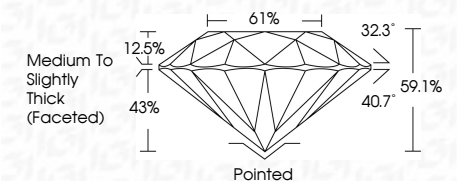
May 7, 2026 IGI Report Number LG798614313 Description LABORATORY GROWN DIAMOND Shape and Cutting Style ROUND BRILLIANT Measurements 8.19 - 8.24 X 4.85 MM GRADING RESULTS Carat Weight 2.01 CARATS Color Grade E Clarity Grade VS 1 Cut Grade EXCELLENT

May 7, 2026 IGI Report Number LG798614313 Description LABORATORY GROWN DIAMOND Shape and Cutting Style ROUND BRILLIANT Measurements 8.19 - 8.24 X 4.85 MM GRADING RESULTS Carat Weight 2.01 CARATS Color Grade E Clarity Grade VS 1 Cut Grade EXCELLENT

PROPORTIONS



Sample Image Used



ADDITIONAL GRADING INFORMATION Polish EXCELLENT Symmetry EXCELLENT Fluorescence NONE Inscription(s) IGI LG798614313 Comments: This Laboratory Grown Diamond was created by Chemical Vapor Deposition (CVD) growth process. Type IIa

COLOR

Color scale table with categories D, E, F, G, H, I, J, Faint, Very Light, Light

CLARITY

Clarity scale table with categories FL, IF, VS 1-2, VS 1-2, SI 1-2, I 1-3, Flawless, Internally Flawless, Very Very Slightly Included, Very Slightly Included, Slightly Included, Included

ADDITIONAL GRADING INFORMATION Polish EXCELLENT Symmetry EXCELLENT Fluorescence NONE Inscription(s) IGI LG798614313 Comments: This Laboratory Grown Diamond was created by Chemical Vapor Deposition (CVD) growth process. Type IIa



Certified SUSTAINABILITY RATED DIAMOND SCS GLOBAL SERVICES All certified diamonds come with an individual certificate, ONLY available at an accredited retailer. Includes QR code and text: FOR THE SUSTAINABILITY RATED CERTIFICATE, SCAN HERE

Summary of report details: May 7, 2026, IGI Report No. LG798614313, ROUND BRILLIANT, 8.19 - 8.24 X 4.85 MM, 2.01 CARATS, E, VS 1, EXCELLENT, 59.1%, 61%, Medium To Slightly Thick (Faceted), Pointed, EXCELLENT, EXCELLENT, NONE, IGI LG798614313. Comments: This Laboratory Grown Diamond was created by Chemical Vapor Deposition (CVD) growth process. Type IIa