



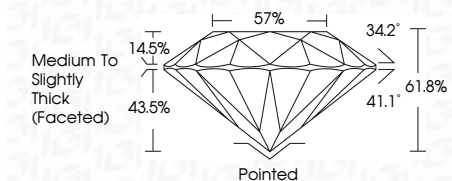
ELECTRONIC COPY

LG798614364 Report verification at igi.org



May 9, 2026 IGI Report Number LG798614364 Description LABORATORY GROWN DIAMOND Shape and Cutting Style ROUND BRILLIANT Measurements 8.13 - 8.19 X 5.03 MM

GRADING RESULTS Carat Weight 2.03 CARATS Color Grade F Clarity Grade VVS 2 Cut Grade IDEAL



ADDITIONAL GRADING INFORMATION Polish EXCELLENT Symmetry EXCELLENT Fluorescence NONE Inscription(s) IGI LG798614364 Comments: This Laboratory Grown Diamond was created by Chemical Vapor Deposition (CVD) growth process. Type IIa



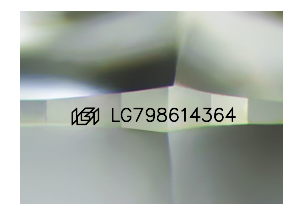
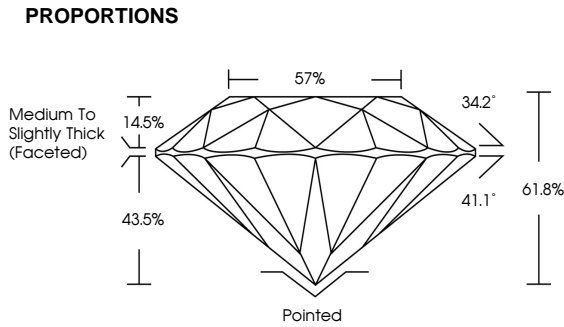
May 9, 2026 IGI Report No LG798614364 ROUND BRILLIANT 8.13 - 8.19 X 5.03 MM 2.03 CARATS F VVS 2 IDEAL 61.8% 57% Medium To Slightly Thick (Faceted) Pointed EXCELLENT EXCELLENT NONE IGI LG798614364 Comments: This Laboratory Grown Diamond was created by Chemical Vapor Deposition (CVD) growth process. Type IIa

LABORATORY GROWN DIAMOND REPORT

May 9, 2026 IGI Report Number LG798614364 Description LABORATORY GROWN DIAMOND Shape and Cutting Style ROUND BRILLIANT Measurements 8.13 - 8.19 X 5.03 MM GRADING RESULTS Carat Weight 2.03 CARATS Color Grade F Clarity Grade VVS 2 Cut Grade IDEAL

ADDITIONAL GRADING INFORMATION Polish EXCELLENT Symmetry EXCELLENT Fluorescence NONE Inscription(s) IGI LG798614364

Comments: This Laboratory Grown Diamond was created by Chemical Vapor Deposition (CVD) growth process. Type IIa



Sample Image Used

Table with columns for Color grades: D, E, F, G, H, I, J, Faint, Very Light, Light

Table with columns for Clarity grades: FL, IF, VS 1-2, VS 1-2, SI 1-2, I 1-3



Certified SUSTAINABILITY RATED DIAMOND SCS GLOBAL SERVICES All certified diamonds come with an individual certificate, ONLY available at an accredited retailer



FOR THE SUSTAINABILITY RATED CERTIFICATE, SCAN HERE →