



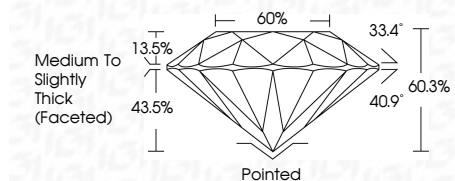
ELECTRONIC COPY

LG798614386 Report verification at igi.org



May 7, 2026 IGI Report Number LG798614386 Description LABORATORY GROWN DIAMOND Shape and Cutting Style ROUND BRILLIANT Measurements 8.18 - 8.22 X 4.94 MM

GRADING RESULTS Carat Weight 2.03 CARATS Color Grade F Clarity Grade VS 1 Cut Grade IDEAL



ADDITIONAL GRADING INFORMATION Polish EXCELLENT Symmetry EXCELLENT Fluorescence NONE Inscription(s) LG798614386 Comments: This Laboratory Grown Diamond was created by Chemical Vapor Deposition (CVD) growth process. Type IIa



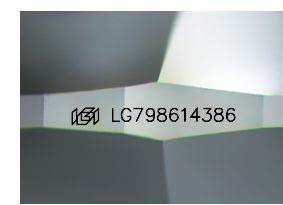
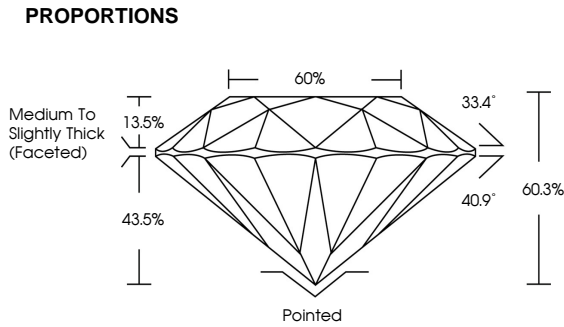
May 7, 2026 IGI Report No LG798614386 ROUND BRILLIANT 8.18 - 8.22 X 4.94 MM 2.03 CARATS F VS 1 IDEAL 60.3% 60% Medium To Slightly Thick (Faceted) Pointed EXCELLENT EXCELLENT NONE NONE LG798614386

LABORATORY GROWN DIAMOND REPORT

May 7, 2026 IGI Report Number LG798614386 Description LABORATORY GROWN DIAMOND Shape and Cutting Style ROUND BRILLIANT Measurements 8.18 - 8.22 X 4.94 MM GRADING RESULTS Carat Weight 2.03 CARATS Color Grade F Clarity Grade VS 1 Cut Grade IDEAL

ADDITIONAL GRADING INFORMATION Polish EXCELLENT Symmetry EXCELLENT Fluorescence NONE Inscription(s) LG798614386

Comments: This Laboratory Grown Diamond was created by Chemical Vapor Deposition (CVD) growth process. Type IIa



Sample Image Used

Table with 10 columns for color grades: D, E, F, G, H, I, J, Faint, Very Light, Light

Table with 6 columns for clarity grades: FL, IF, VS 1-2, VS 1-2, SI 1-2, I 1-3



Certified SUSTAINABILITY RATED DIAMOND SCS GLOBAL SERVICES All certified diamonds come with an individual certificate, ONLY available at an accredited retailer



FOR THE SUSTAINABILITY RATED CERTIFICATE, SCAN HERE →