



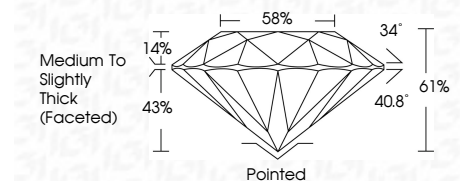
ELECTRONIC COPY

LG798614462 Report verification at igi.org



May 7, 2026 IGI Report Number LG798614462 Description LABORATORY GROWN DIAMOND Shape and Cutting Style ROUND BRILLIANT Measurements 8.10 - 8.18 X 4.97 MM

GRADING RESULTS Carat Weight 2.02 CARATS Color Grade F Clarity Grade VVS 2 Cut Grade IDEAL



ADDITIONAL GRADING INFORMATION Polish EXCELLENT Symmetry EXCELLENT Fluorescence NONE Inscription(s) LG798614462 Comments: This Laboratory Grown Diamond was created by Chemical Vapor Deposition (CVD) growth process. Type IIa

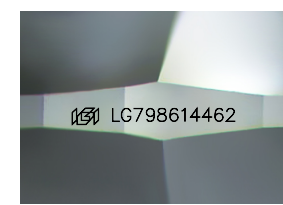
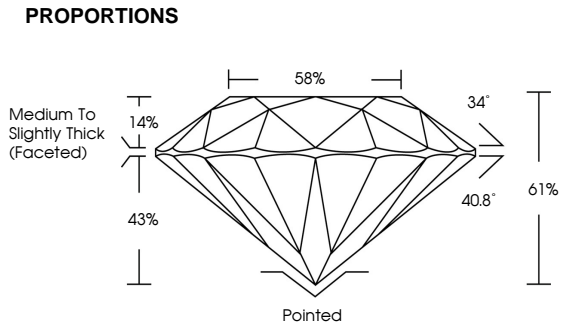


May 7, 2026 IGI Report No LG798614462 ROUND BRILLIANT 8.10 - 8.18 X 4.97 MM 2.02 CARATS F VVS 2 IDEAL 61% 58% Medium To Slightly Thick (Faceted) Pointed EXCELLENT EXCELLENT NONE LG798614462

May 7, 2026 IGI Report Number LG798614462 Description LABORATORY GROWN DIAMOND Shape and Cutting Style ROUND BRILLIANT Measurements 8.10 - 8.18 X 4.97 MM GRADING RESULTS Carat Weight 2.02 CARATS Color Grade F Clarity Grade VVS 2 Cut Grade IDEAL

ADDITIONAL GRADING INFORMATION Polish EXCELLENT Symmetry EXCELLENT Fluorescence NONE Inscription(s) LG798614462

Comments: This Laboratory Grown Diamond was created by Chemical Vapor Deposition (CVD) growth process. Type IIa



Sample Image Used

Table with columns: D, E, F, G, H, I, J, Faint, Very Light, Light

Table with columns: FL, IF, VS 1-2, VS 1-2, SI 1-2, I 1-3, Flawless, Internally Flawless, Very Very Slightly Included, Very Slightly Included, Slightly Included, Included



Certified SUSTAINABILITY RATED DIAMOND SCS GLOBAL SERVICES All certified diamonds come with an individual certificate, ONLY available at an accredited retailer



FOR THE SUSTAINABILITY RATED CERTIFICATE, SCAN HERE →